



Nature runs on sunlight.



Nature only uses the energy it needs.



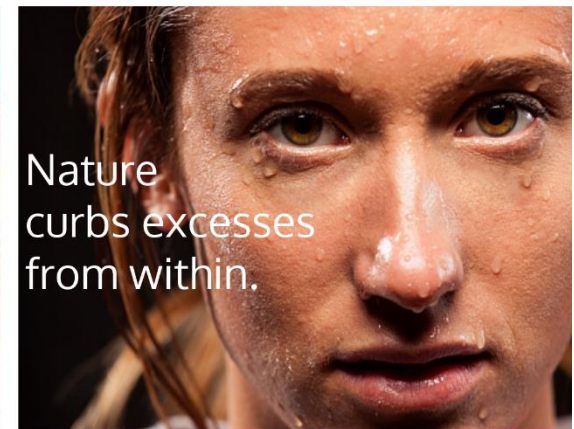
Nature recycles everything.



Nature banks on diversity.



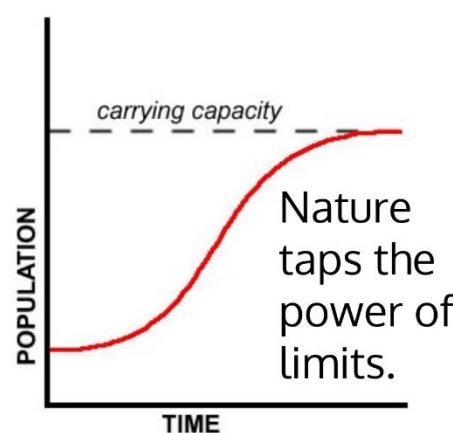
Nature rewards cooperation.



Nature curbs excesses from within.



Nature relies on local expertise.



Nature fits form to function.

All hail Janine Benyus! She presented these nine principles as a canon for designers in *Biomimcry: Innovation inspired by nature*. EduChange has been tapping nature's wisdom as much as possible. As the field of education moves away from cobbled-together policies of compliance, and towards intentional designs for learning, we hope more biomimics will join us.