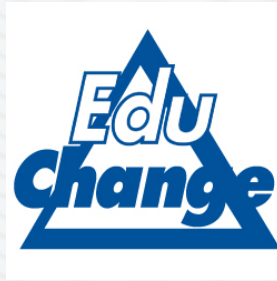




Connected learning. Connected world.™

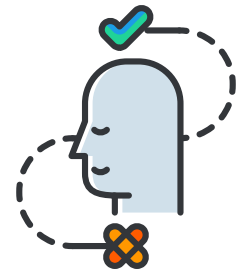


Standards for Educators

The Sustainable OER Model designed by EduChange align with ISTE Standards for Educators. **EVERY SINGLE INTEGRATED SCIENCE STRAND** aligns with the specific standards cited in this document.

Find all standards here:

<https://www.iste.org/standards/for-educators>



Learner

a. - c. Set professional learning goals to explore and apply pedagogical approaches made possible by technology and reflect on their effectiveness; Pursue professional interests by creating and actively participating in local and global learning networks; Stay current with research that supports improved student learning outcomes, including findings from the learning sciences.



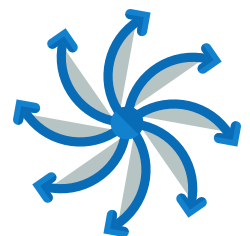
Leader

a.- c. Shape, advance & accelerate a shared vision for empowered learning with technology; Advocate for equitable access to educational technology, digital content & learning opportunities to meet the diverse needs of all students; Model for colleagues the identification, exploration, evaluation, curation & adoption of new digital resources & tools for learning.



Citizen

a.- d. (abbreviated) Create experiences for learners to make positive, socially responsible contributions & exhibit empathetic behavior online that build community; establish a learning culture that promotes curiosity & critical examination of online media; mentor students in safe, legal & ethical practices with digital tools, the protection of intellectual rights & management of personal data, privacy & digital identity.



Collaborator

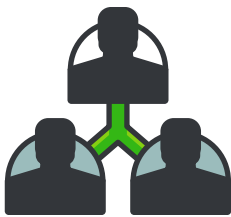
a. - d. (abbreviated) Dedicate planning time to collaborate with colleagues to create authentic learning experiences that leverage technology; collaborate and co-learn with students; use collaborative tools to expand students' authentic, real-world learning experiences by engaging virtually, locally & globally; Demonstrate cultural competency when communicating.



5

Designer

- a. Use technology to create, adapt and personalize learning experiences that foster independent learning and accommodate learner differences and needs.
- b. Design authentic learning activities that align with content area standards and use digital tools and resources to maximize active, deep learning.
- c. Explore and apply instructional design principles to create innovative digital learning environments that engage and support learning.



Facilitator

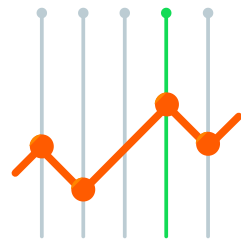
- a. - d. (abbreviated) Foster a culture where students take ownership of their learning goals and outcomes; manage the use of technology and student learning strategies in digital platforms, virtual environments, or in the field; create learning opportunities that challenge students to use a design process and computational thinking; Model and nurture creativity and creative expression to communicate ideas, knowledge or connections.

6

7

Analyst

- a. Provide alternative ways for students to demonstrate competency and reflect on their learning using technology.
- b. Use technology to design and implement a variety of assessments that accommodate learner needs, provide timely feedback to students and inform instruction.
- c. Use assessment data to guide progress and communicate with students, parents and education stakeholders to build student self-direction.



Instructional Coaches Meet Standards, Too!

See the coach standards here:

<https://www.iste.org/standards/for-coaches>

Change Agent: Tech coaches facilitate equitable use of digital learning tools and connect leaders, educators, instructional support, technical support, domain experts and solution providers to maximize the potential of technology for learning.

Collaborator: Coaches partner with educators to identify digital learning content that is culturally relevant, developmentally appropriate and aligned to standards; and to evaluate the efficacy of digital learning content and tools to inform adoption.

Professional Learning Facilitator: Coaches build the capacity of educators, leaders and instructional teams, evaluate the impact of professional learning, and support cultural, social-emotional and learning needs.

Digital Citizen Advocate: Coaches model digital citizenship and support educators and students in recognizing the responsibilities and opportunities inherent in living in a digital world.